



## **Mobilizing Investments in Nitrogen Management**

**Naiana Milea- Director**



MINISTERUL MEDIULUI,  
APELOR ȘI PĂDURILOR

**June 2020**





# ROMANIA

## Significant impact on the Black Sea

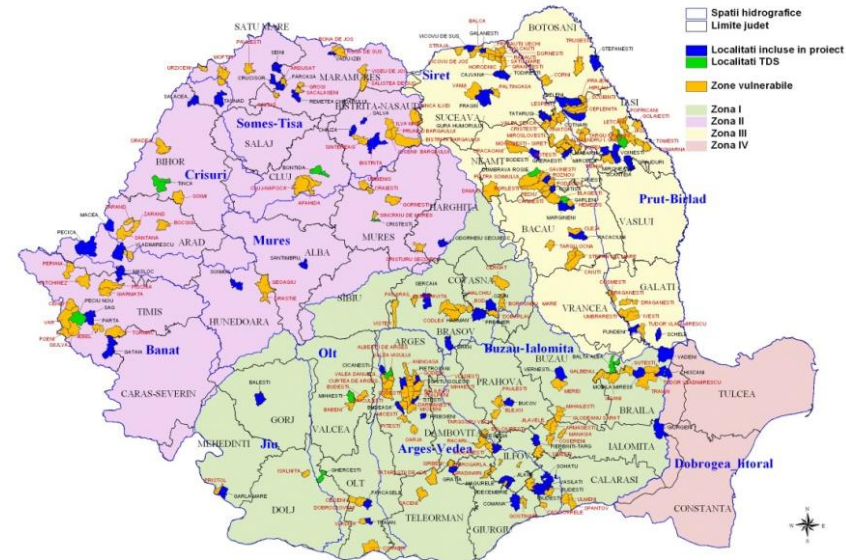
- Almost 1/3 of the Danube River Basin surface
- More than 1/3 of the Danube River length (1,075 km)
- 99% of the Romanian territory is in the Danube Water Basin
- More than 3 million farms, with 90 % under 5ha covering almost 30 % of the total agricultural



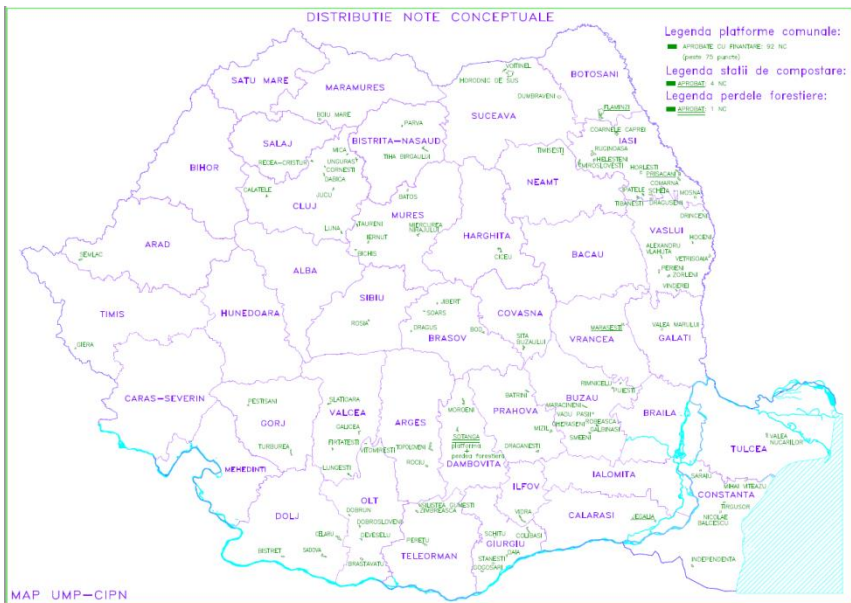
Border of the Danube River Basin



# Nutrient Pollution Control in Romania **2008 - 2017**



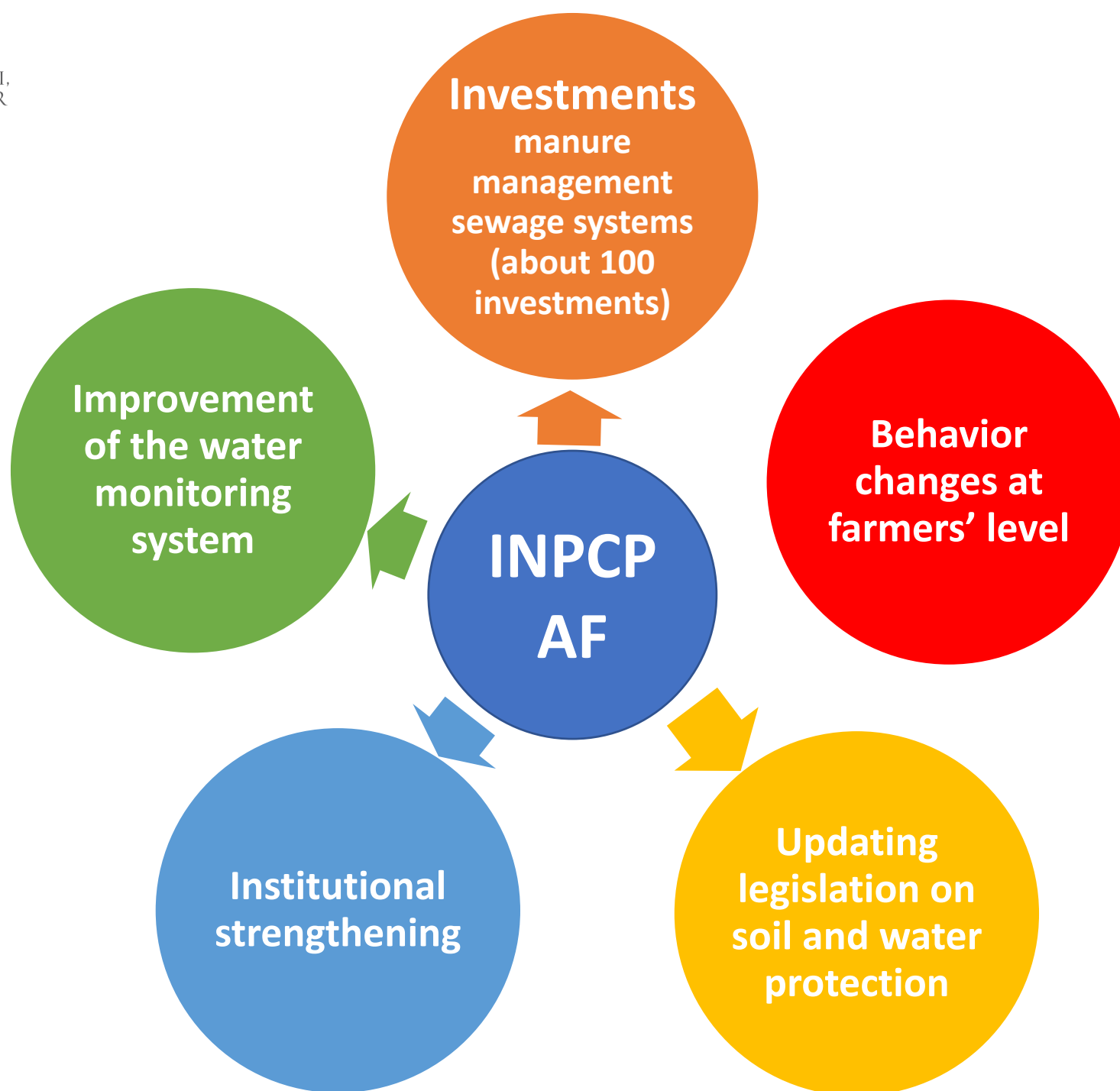
# Nutrient Pollution in Romania **2017 – 2022**



**Country-wide project,  
Given that entire territory of Romania  
applies the Nitrate Directive**

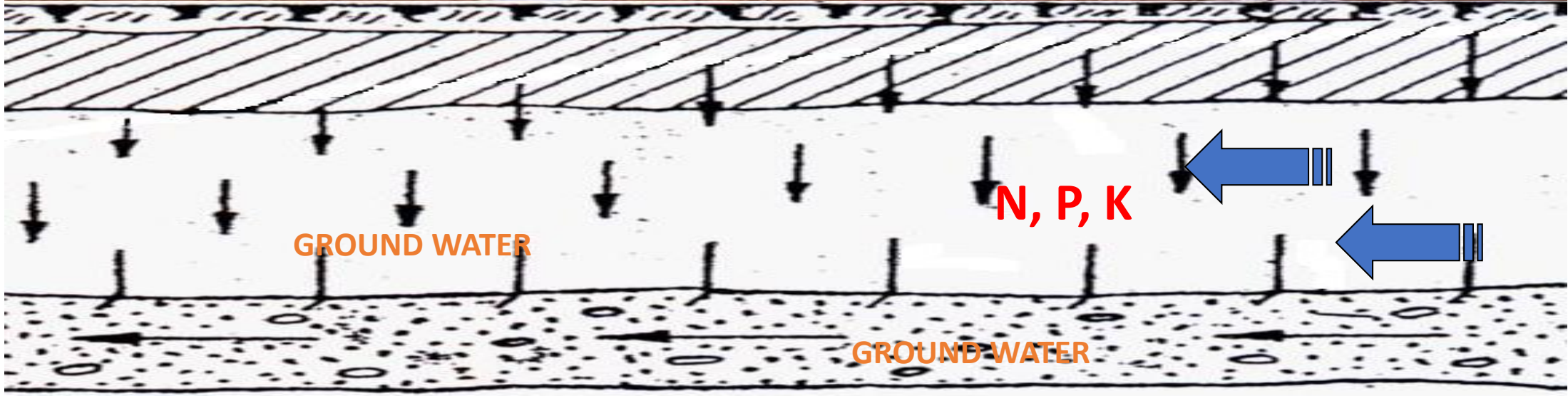








N, P, K

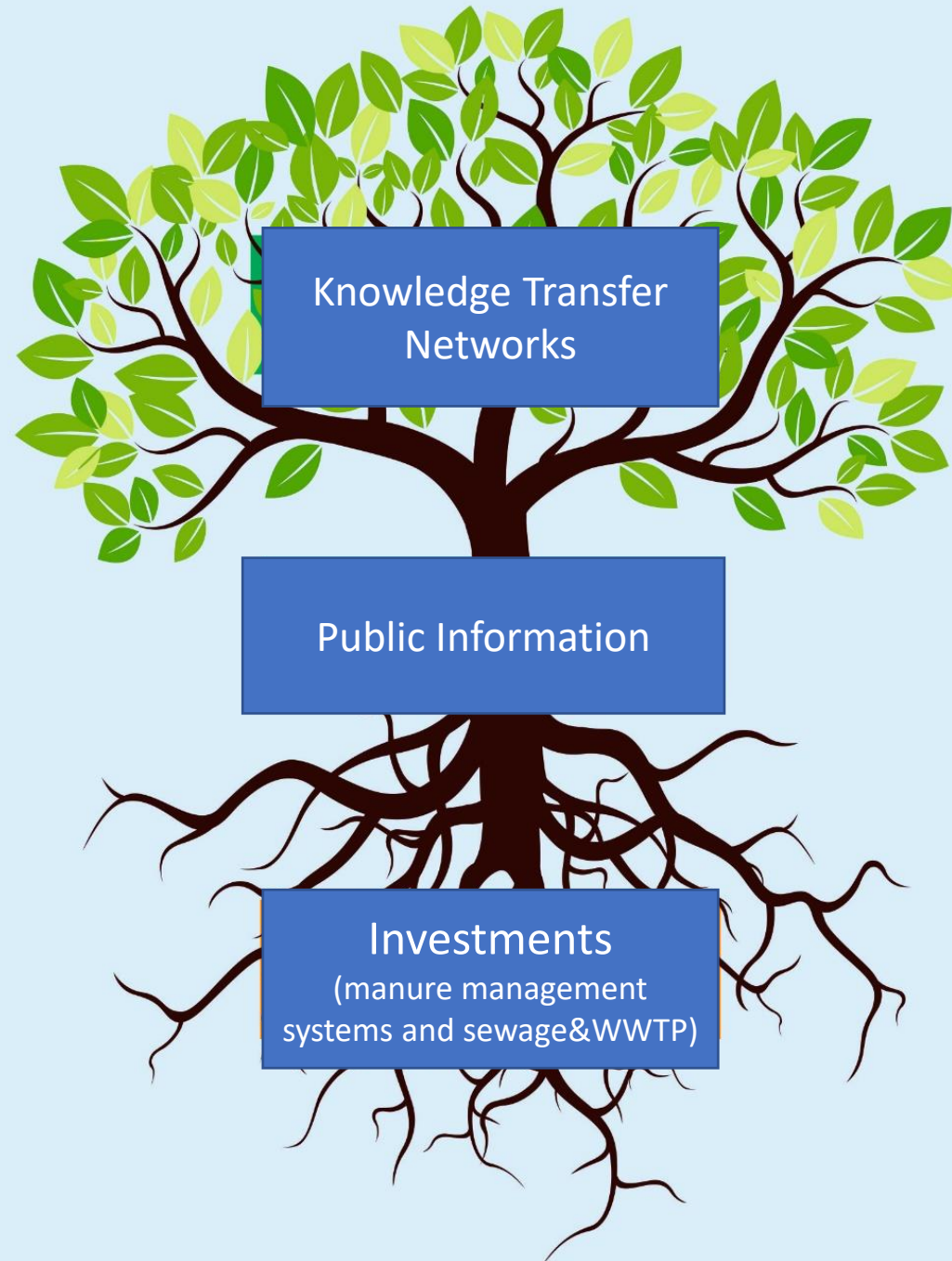


N, P, K

GROUND WATER

GROUND WATER

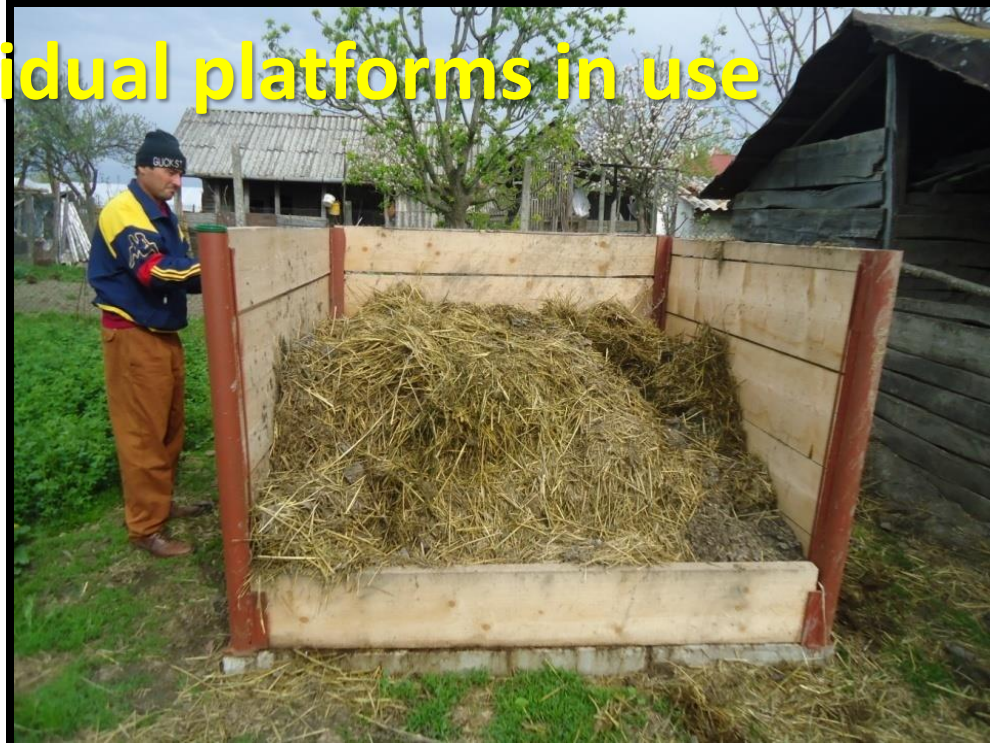








Communal and individual platforms in use





# Biogas

## Community level solution for manure management

Functional Guarantee	Minimum (or Maximum, as appropriate) Requirement
1. Electrical Power (hourly production)	Minimal 370 kW
2. Thermal Power (hourly production)	Minimal 424 KW
3. Concentration of H <sub>2</sub> S from biogas	Maximal 200 ppm
4. Dried solid digestate from dryer	Minimal 88% dry material
5. Energy Crops Consumption	Maximum 5,5 tons/day







**Knowledge Transfer Networks for farmers training,  
information and permanent support**





# Actions to attract the interest of decision makers, investors and local representatives

## Four levels of action:

- I. Involve the authorities, beneficiaries and other stakeholders in the process of designing the infrastructure for achieving visible results on water quality - *demand driven and customized investments*;
- II. Collaborate and support local authorities to implement efficient systems for nutrient management - *Monitoring and control compulsory*;
- III. Inform, dialogue and increase awareness in order to induce changes in the current behaviors;
- IV. Monitor the soil and waters quality and the effect of the remedial measures. Communicate the results and future measures.